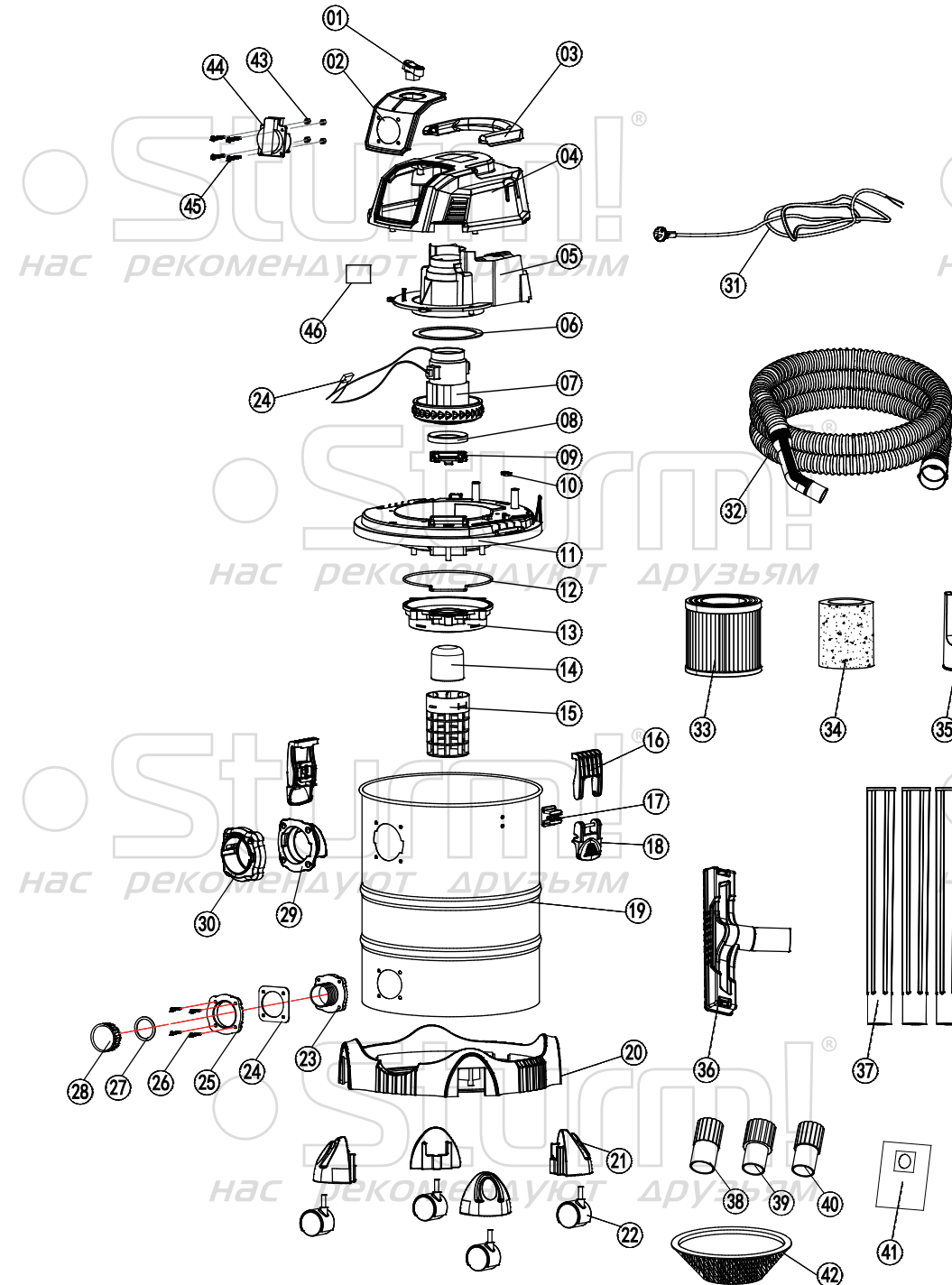


VC1530



NO.	DESCRIPTION
1	LI003 SWITCH
2	PANEL
3	HANDLE
4	TOP COVER
5	MOTOR COVER
6	FOAM STRIP
7	MOTOR
8	SEALING RING
9	DUST SHAKING COVER PLATE
10	POER CORD PRESSURE PLATE
11	BOTTOM SECTION
12	FOAM STRIP
13	SAFETY VALVE BASE
14	2001 SAFETY VALVE
15	BOTTOM SECTION BASKET
16	BUCKLE HOOK
17	BUCKLE SEAT
18	BUCKLE WRENCH
19	TANK
20	BASE
21	UNIVERSAL WHEEL SEAT
22	UNIVERSAL WHEEL
23	DRAIN OUTLET
24	DRAIN SEALING RING
25	DRAIN CAP
26	4 * 16 CROSS PAN HEAD SELF TAPPING SCREW
27	DRAINAGE COVER SEALING RING
28	DRAINAGE COVER
29	AIR INLET SEAT
30	AIR INLET
31	POER CORD
32	HOSE
33	HEPA FILTER
34	SPONGE FILTER
35	CREVICE NOZZLE
36	WET&DRY BRUSH
37	PLASTIC EXTENION TUBES 3PCS
38	ADAPTER 35-38
39	ADAPTER 32-35
40	ADAPTER 35-32
41	FABRIC DUST BAG
42	BASKET FILTER
43	NUT
44	SOCKET OUTLET
45	SCREW
46	PCB

VC1530-EX-RU240919-1